



Shopping streets
+
Galerie Grand'Place
+
Gare de Lille Europe
+
Gare de Lille Flandres
+
Le 31
+
Les Tanneurs
+
Westfield Euralille
=
1,808 locations

Codata method

- **On-site** data collections
- Distance covered by the data-collector : **40 km**
- **Annual** update
- Detailed **plans**
- Exhaustive within **Codata perimeters**



Vacancy rate

2021 **9.2 %**  2022 **10.1 %**



% Retailers

2021 **48.6 %**  2022 **46.7 %**

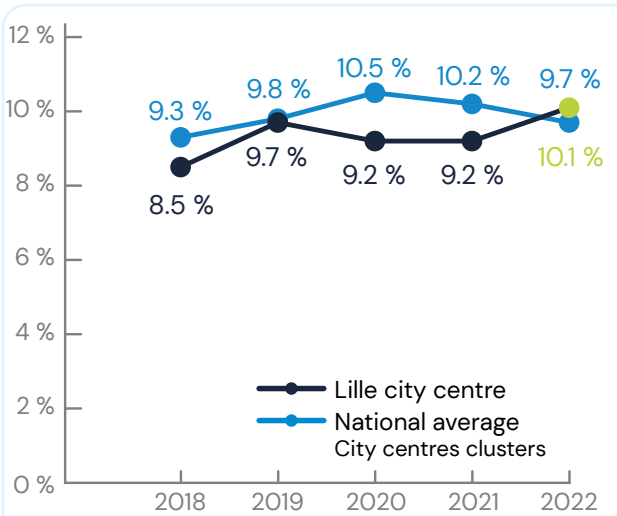
Socio-demographic statistics (*)

234,475 inhabitants Insee 2019

Unemployment rate : 12.7 % Insee 2019

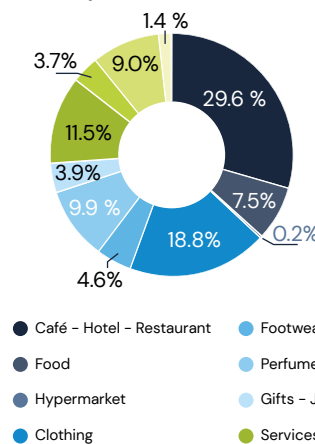
(*) Lille Commune

Vacancy rate : history

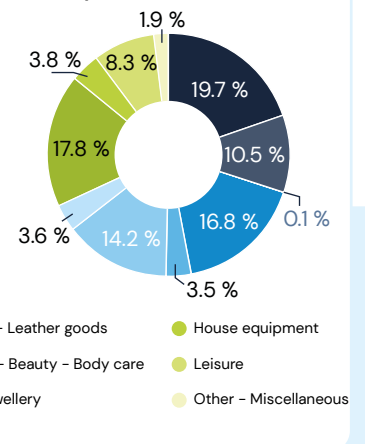


Distribution of activities

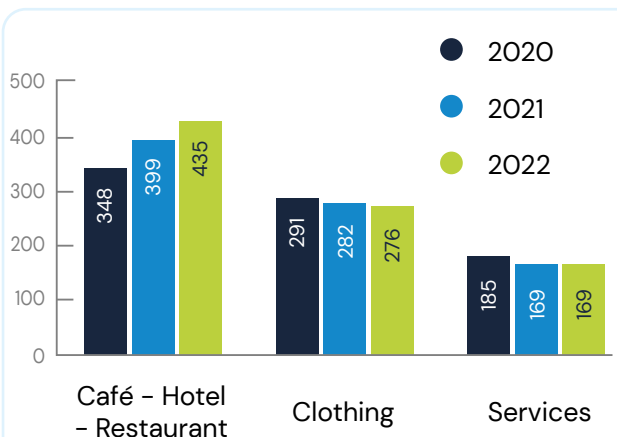
Lille City centre (2022)



National average City centres (2021)



Top 3 activities : number of shops



Distribution of retailers by site

